

Wrede



ATTIC APARTMENT NEAR TEGNÉRLUNDEN

Located in an attractive setting near Tegnérunden, this tastefully designed loft apartment offers 155 square meters of floor space and a 6-square-meter southwest-facing terrace. It provides a home that goes above and beyond the ordinary, where classic loft details meet generous spaces and a flexible floor plan with up to five potential bedrooms. The home features an airy and open floor plan connecting the living room, dining area, and kitchen, creating a social and inviting atmosphere. The exposed ceiling beams, generous ceiling height, and beautiful herringbone-patterned oak parquet flooring enhance the exclusive feel. From the living room, light floods in through three deep and high skylights facing the rooftops of Teknologgatan. The kitchen is tastefully designed in shades of gray and serves as a natural gathering place with its generous kitchen island. It features an elegant marble countertop and an impressive 100 cm wide range with three ovens and an induction cooktop. In addition, there is ample storage space and a wine storage cabinet with room for approximately 290 bottles. Adjacent to the kitchen is a practical coffee nook with easy access to the terrace. The southwest-facing terrace is accessed via large sliding doors with glazing bars and offers sun from morning to evening, with space for both a seating area and a grill. There is also an electric awning that extends the outdoor season even further. The floor's bedrooms are cleverly arranged, with a larger bedroom featuring an en-suite bathroom on one side and additional bedrooms on the opposite side of the loft. The floor plan allows for up to five bedrooms for those who wish, making the home flexible for both families and those seeking extra space. The home also offers amenities such as an elevator all vägen the floor level, a security door, air conditioning, and a welcoming entryway with light-colored tile flooring, underfloor heating, and built-in storage. The location is highly desirable, with proximity to Odenplan, Vasaparken, and Stureplan. The homeowners' association is financially sound, with low fees, major renovations already completed, and strong rental income from commercial spaces. The building is beautiful and was constructed in 1880 based on designs by architects K. Axel & K. Hjalmar.

ADDRESS
Teknologgatan 5, 4th floor

PRICE
22 000 000 SEK / bid

ELEVATOR
Yes,

AREA
Vasastan

FEE
4 074 SEK per month

ASSOCIATION
BRF Astrea 12

LIVING AREA
137 sqm

FORM OF TRANSFER
Condominium - Apartment

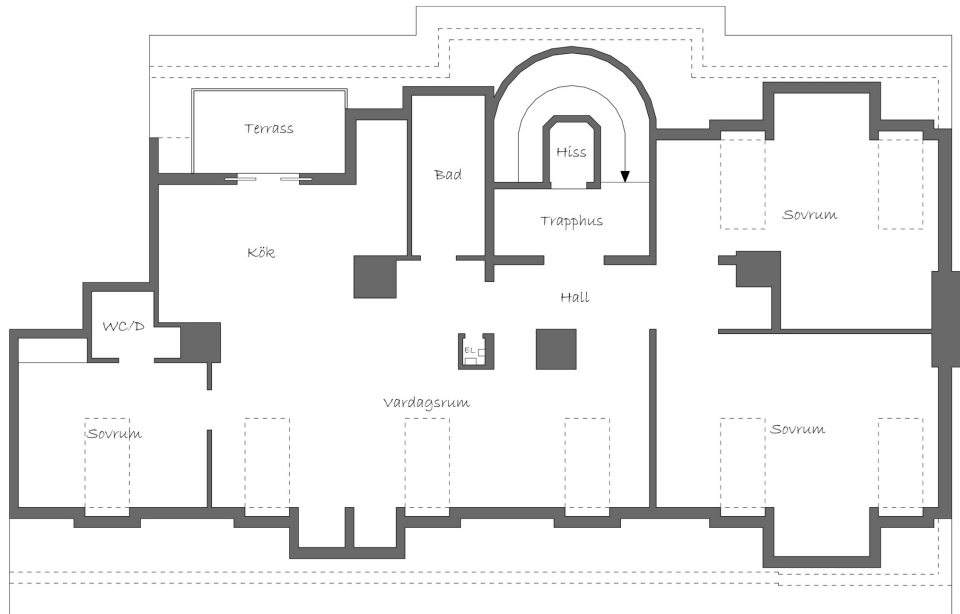
ROOM

APARTMENT NUMBER
051

SUITE
4

INCLUDED IN THE FEE
Heating, Water

Wrede



Viss avvikelse kan förekomma.



FOR QUESTIONS AND MORE INFORMATION, VISIT WREDE.SE

Imran Kararic
Real Estate Agent, Stockholm
imran@wrede.se
073-585 12 85

Titti Johansson
Real Estate Agent & Managing Partner, Stockholm &
Skåne
titti.j@wrede.se
070-464 86 97